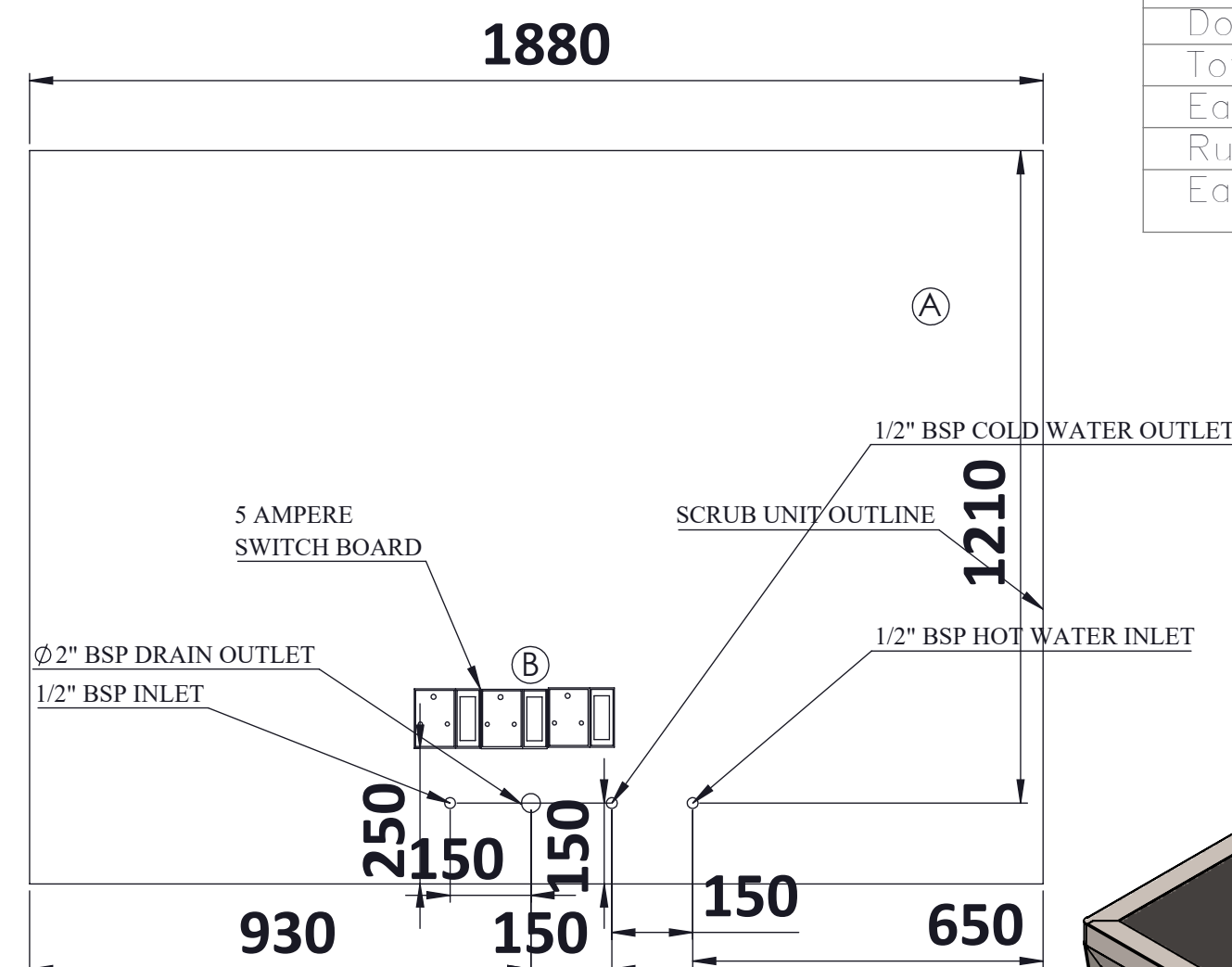
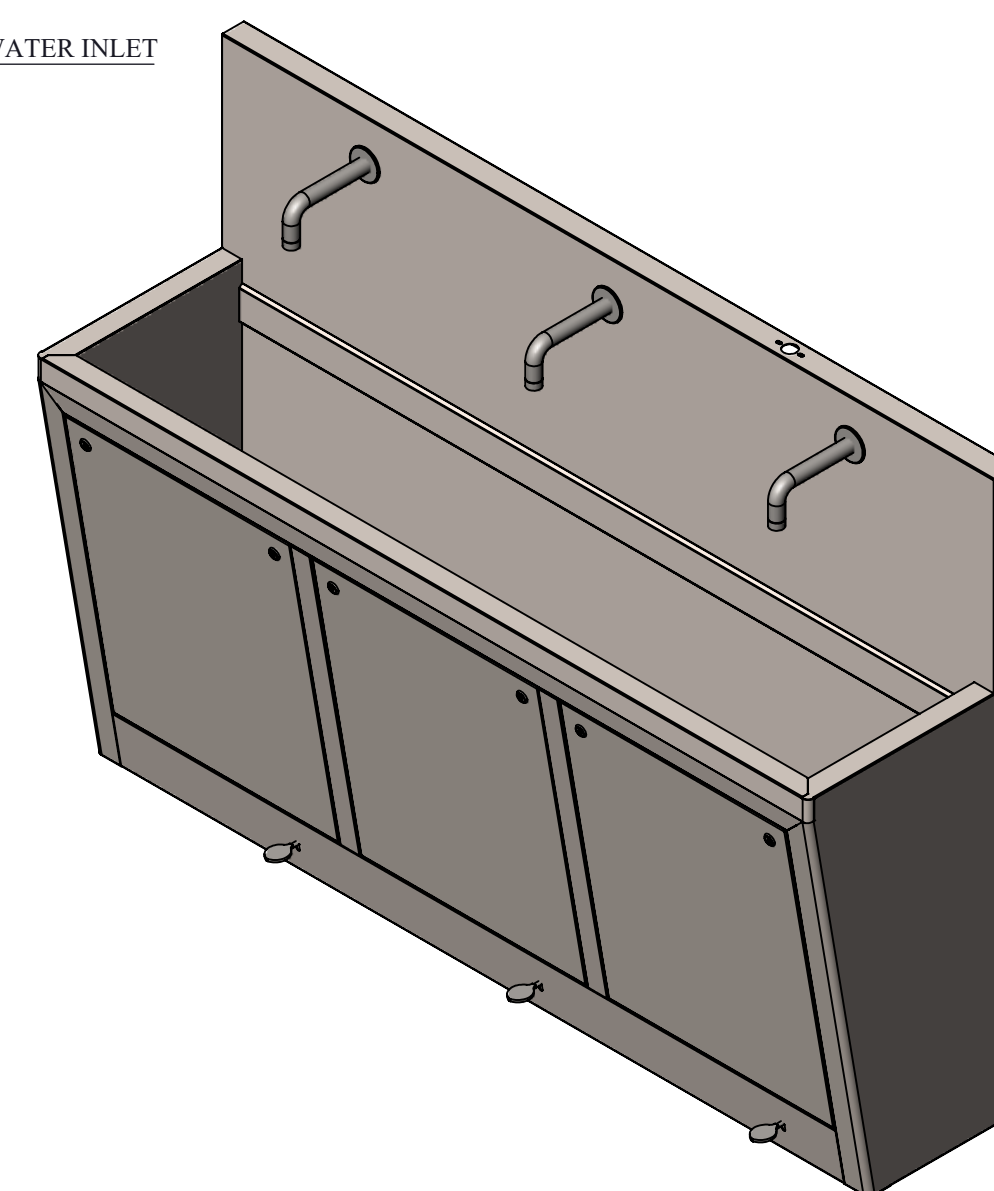


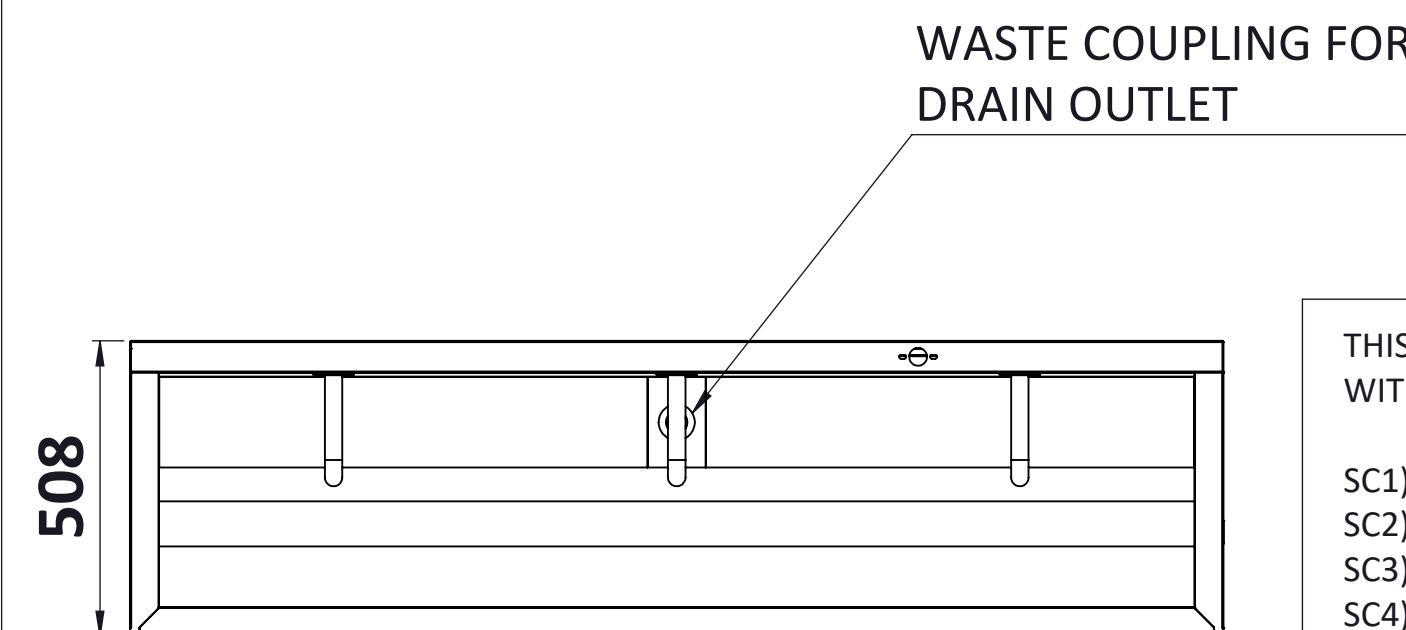
FRONT VIEW



WALL PLUMBING DIAGRAM



ISOMETRIC VIEW




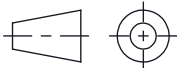
TOP VIEW

THIS MODEL CAN ALSO BE SUPPLIED WITH ADDITIONAL FEATURES ALONG WITH THIS OPTION:-

- SC1) AUTOMATIC SENSOR OPTION
SC2) HOT & COOL WATER OPTION
SC3) SOAP DISPENSER ELBOW OPTION
SC4) SOAP DISPENSER FOOT OPTION
SC6) SOAP DISPENSER AUTOMATIC SENSOR OPTION

NOTE:- WALL PLUMBING DIAGRAM

1. IN CASE OF HOT & COOL WATER CONNECTION, DIMENSIONS MARKED AS (A) WILL BE APPLICABLE.
2. IN CASE OF SENSOR CONNECTION, DIMENSIONS MARKED AS (B) WILL BE APPLICABLE.

		<h1 style="text-align: center;"><i>CMP METAL</i></h1>			
NAME		DATE	MODEL NO.		
DRN	SUNIL		<h2 style="text-align: center;"><i>CMP3SSMF-1</i></h2>		
CHD	AJAY				
APPD	SUNIL				
SCALE	1:1		TITLE:		SIZE
ALL DIMENSIONS IN MM			3 BAY SCRUB SINK WITH MANUAL FOOT OPERATED SIZE 1880WX508DX1360H		A2
FIRST ANGLE PROJECTION			DRG.NO:—		SHEET NO
			CMP-701		REV
			1 OF 1		0

Features:-
Foot Operate Systems Arrannnngement
Material S.S 304-1.2 Thikness
Perfect Matt 4 no finishing
Sink Spout Taps & Foot taps (Preesmatic)
Qty 3+3 no Brand -Jaguar
Plumbing Material Brand - Astral CPVC
Waste Coupling for Collapsible Pipe
Door Lock Qty 6 & Key Qty 1 nos
Total product 1-year warranty
Easy to clean surface
Rust proof material
Easy to install & Long life