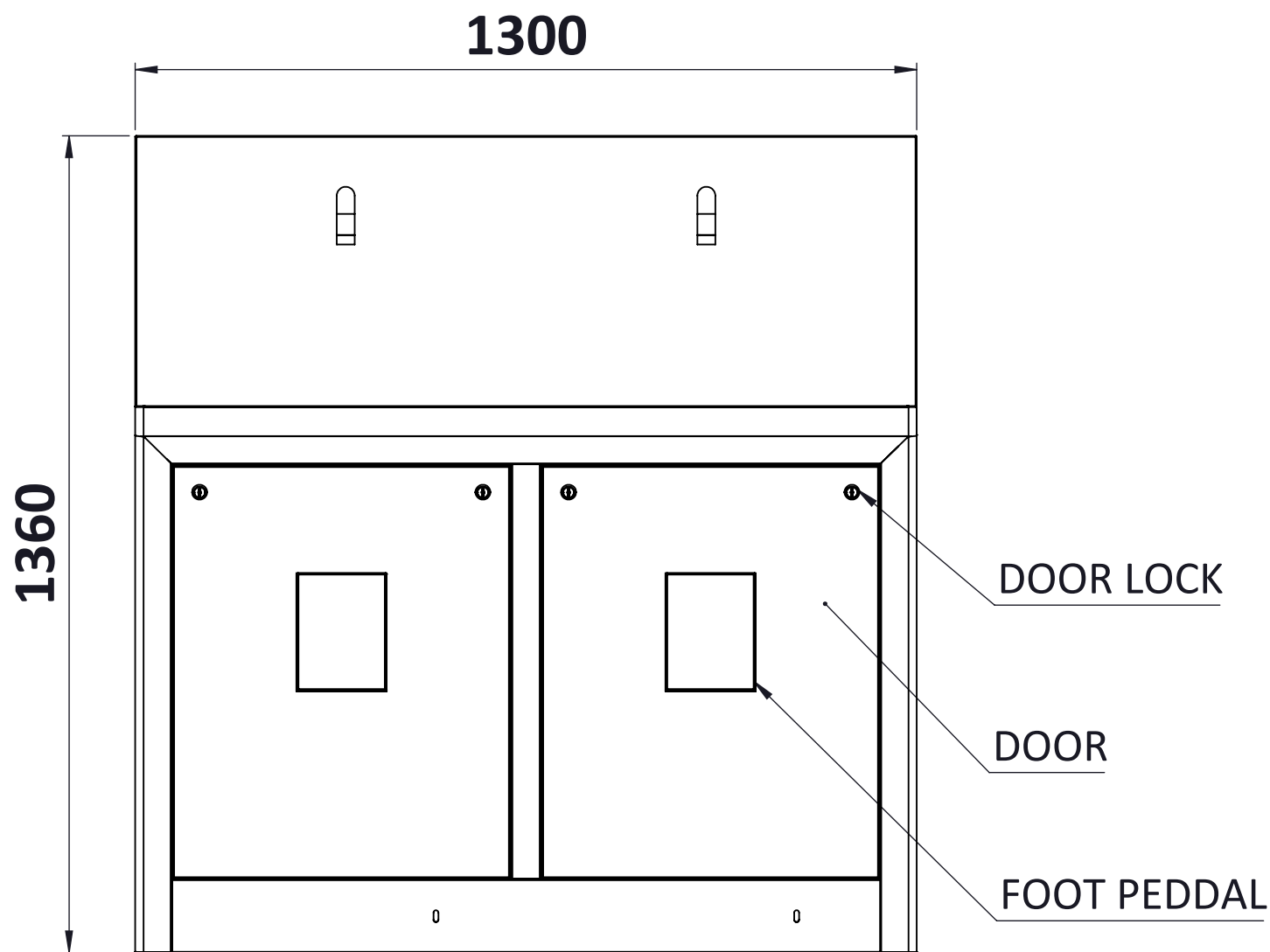


All information contained in this document is confidential and should not be used without prior consent of
CMP METALS.

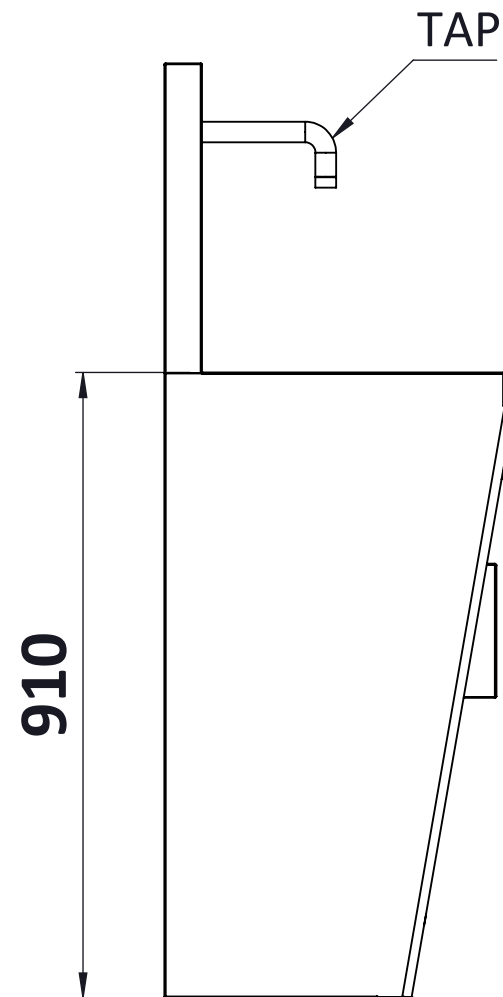
DRG.NO. CMP-602

IF IN DOUBT ASK

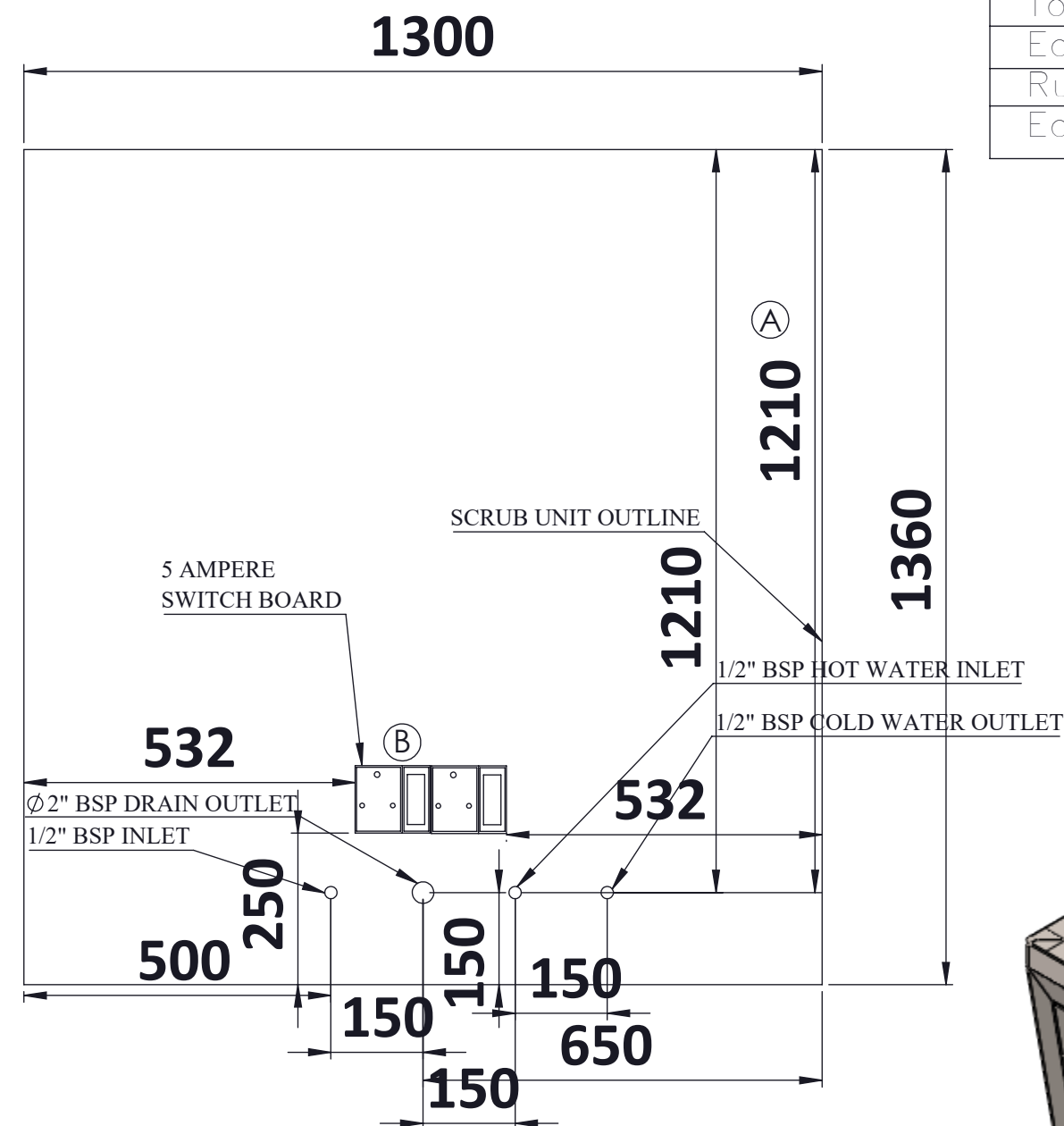
DO NOT SCALE DRAWING



FRONT VIEW

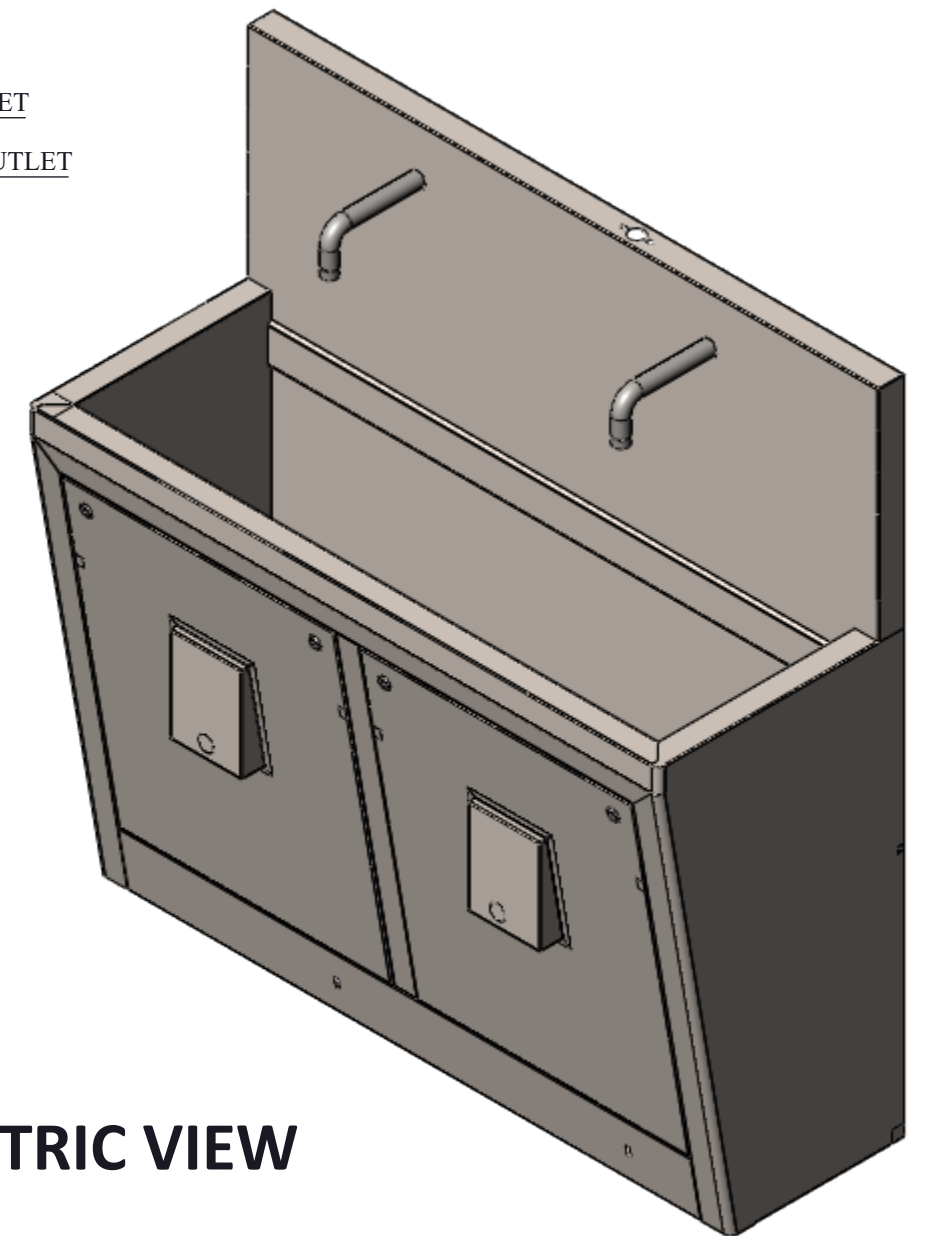


SIDE VIEW

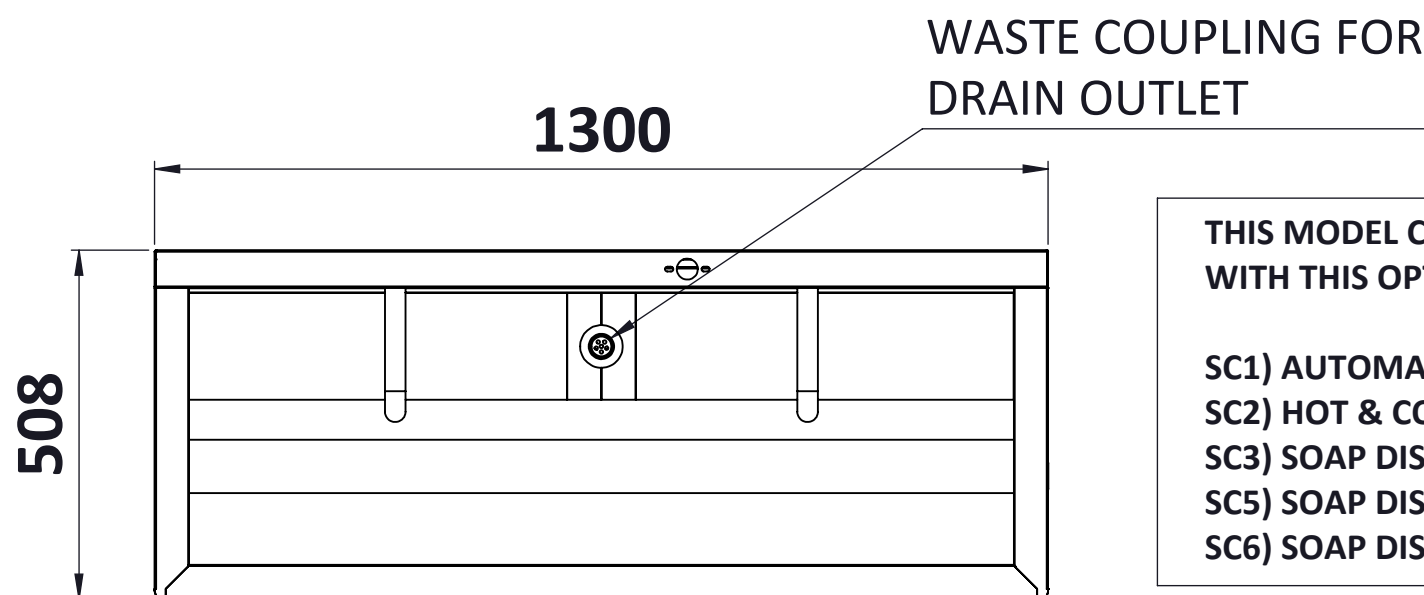


WALL PLUMBING DIAGRAM

Features:-
Knee Operate Systems Arrannngement
Material S.S 304-1.2 Thikness
Perfect Matt 4 no finishing
Sink Spout Taps & Knee taps (Preesmatic)
Qty 2+2 no Brand -Jaguar
Plumbing Material Brand - Astral CPVC
Waste Coupling for Collapsible Pipe
Door Lock Qty 4 & Key Qty 1 nos
Total product 1-year warranty
Easy to clean surface
Rust proof material
Easy to install & Long life



ISOMETRIC VIEW




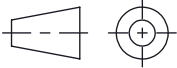
TOP VIEW

THIS MODEL CAN ALSO BE SUPPLIED WITH ADDITIONAL FEATURES ALONG WITH THIS OPTION:-

- SC1) AUTOMATIC SENSOR OPTION
- SC2) HOT & COOL WATER OPTION
- SC3) SOAP DISPENSER ELBOW OPTION
- SC5) SOAP DISPENSER KNEE OPTION
- SC6) SOAP DISPENSER AUTOMATIC SENSOR OPTION

NOTE:- WALL PLUMBING DIAGRAM

1. IN CASE OF HOT & COOL WATER CONNECTION, DIMENSIONS MARKED AS (A) WILL BE APPLICABLE.
2. IN CASE OF SENSOR CONNECTION, DIMENSIONS MARKED AS (B) WILL BE APPLICABLE.

<div><p>CMP METAL "The Name of Quality" 50 - 100 - 2015</p></div>		<div><h1>CMP METAL</h1></div>			
	NAME	DATE	MODEL NO.		
DRN	SUNIL		CMP2SSMK-2		
CHD	AJAY				
APPD	SUNIL		TITLE:		SIZE
SCALE	1 : 1		2BAY SCRUB SINK MANUAL KNEE OPERATE SIZE 1300WX508DX1360H		A2
ALL DIMENSIONS IN MM					
FIRST ANGLE PROJECTION			DRG.NO:— CMP—602		SHEET NO 1 OF 1
					REV. 0