

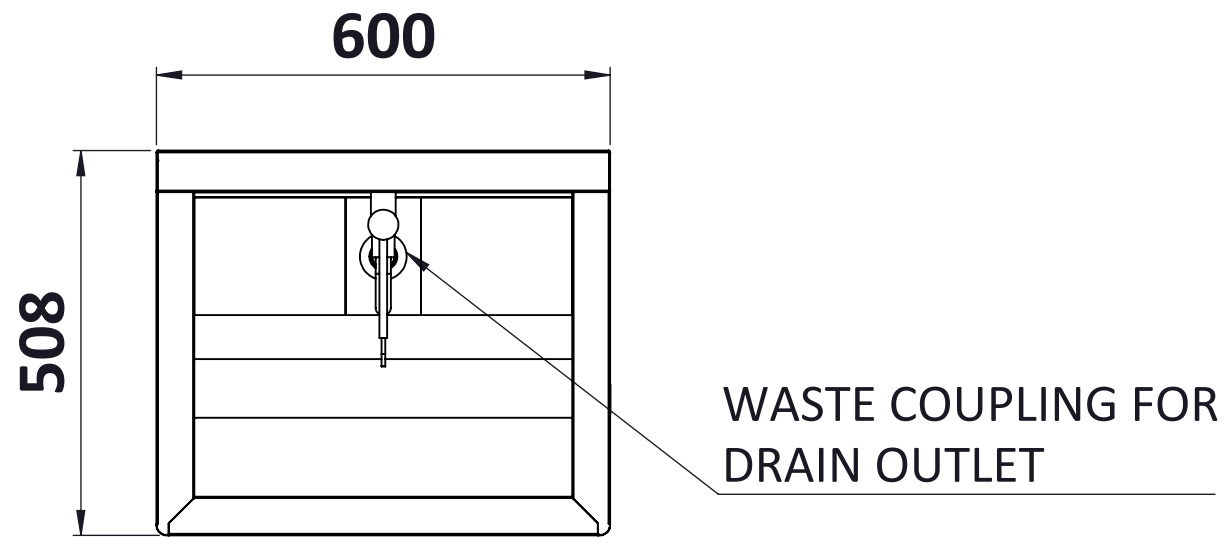
All information contained in this document is confidential and should not be used without prior consent of

CMP METALS.

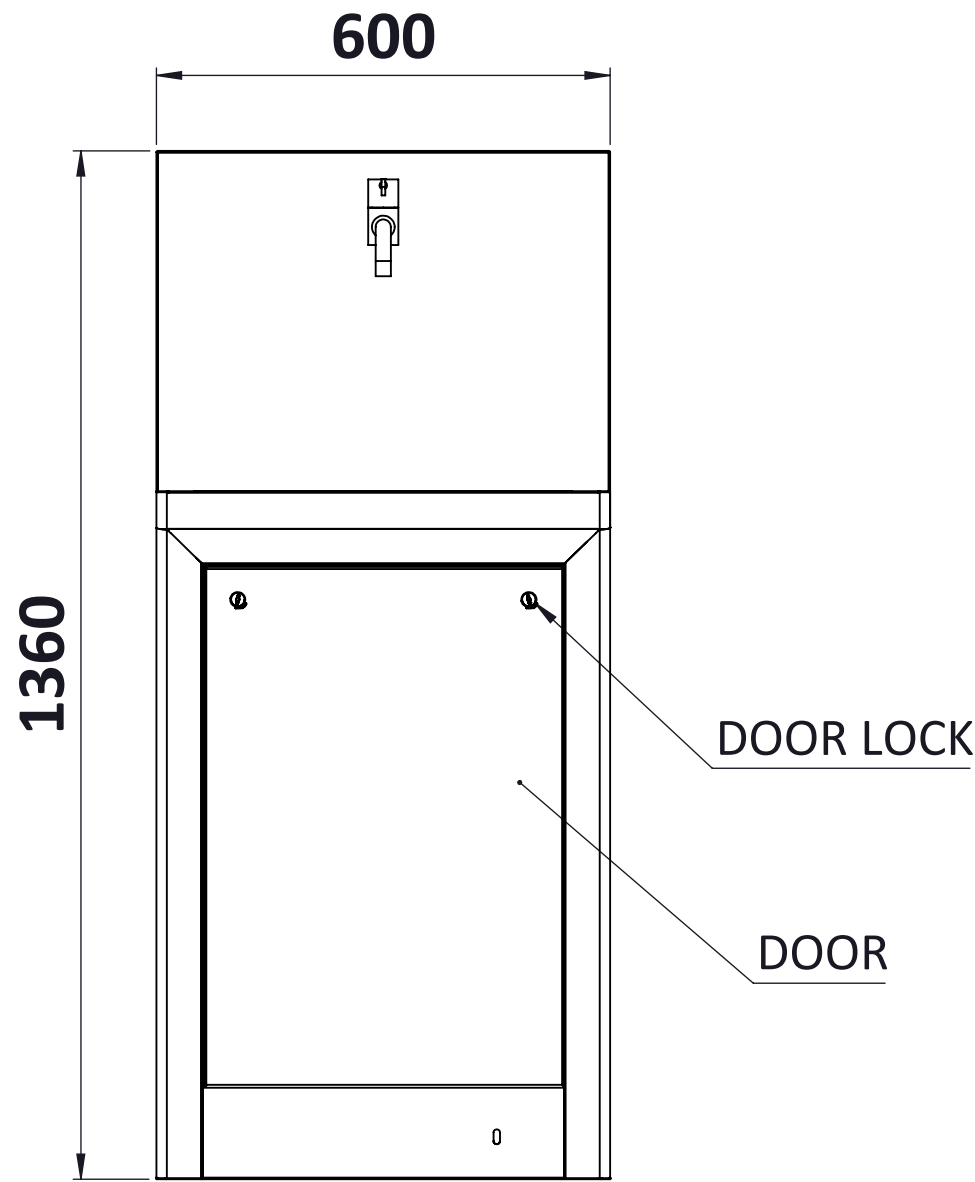
DO NOT SCALE DRAWING

IF IN DOUBT ASK

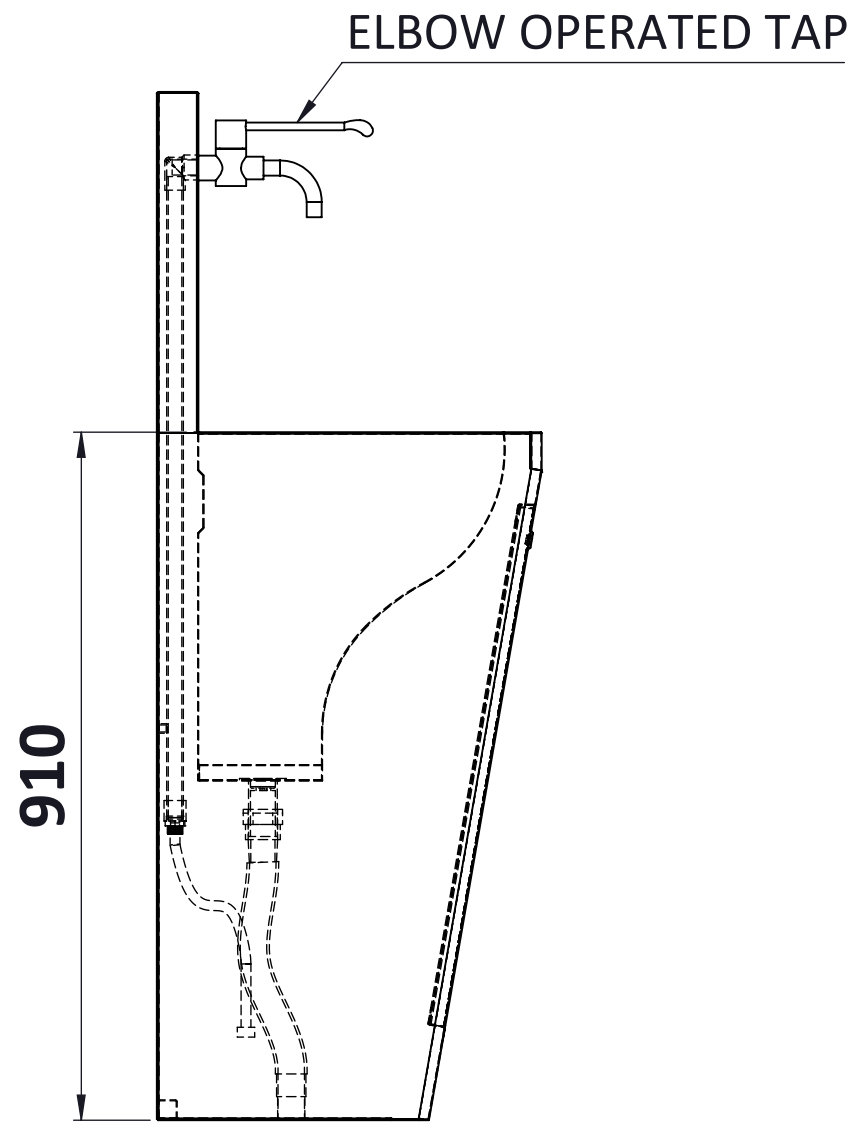
DRG.NO. CMP-503



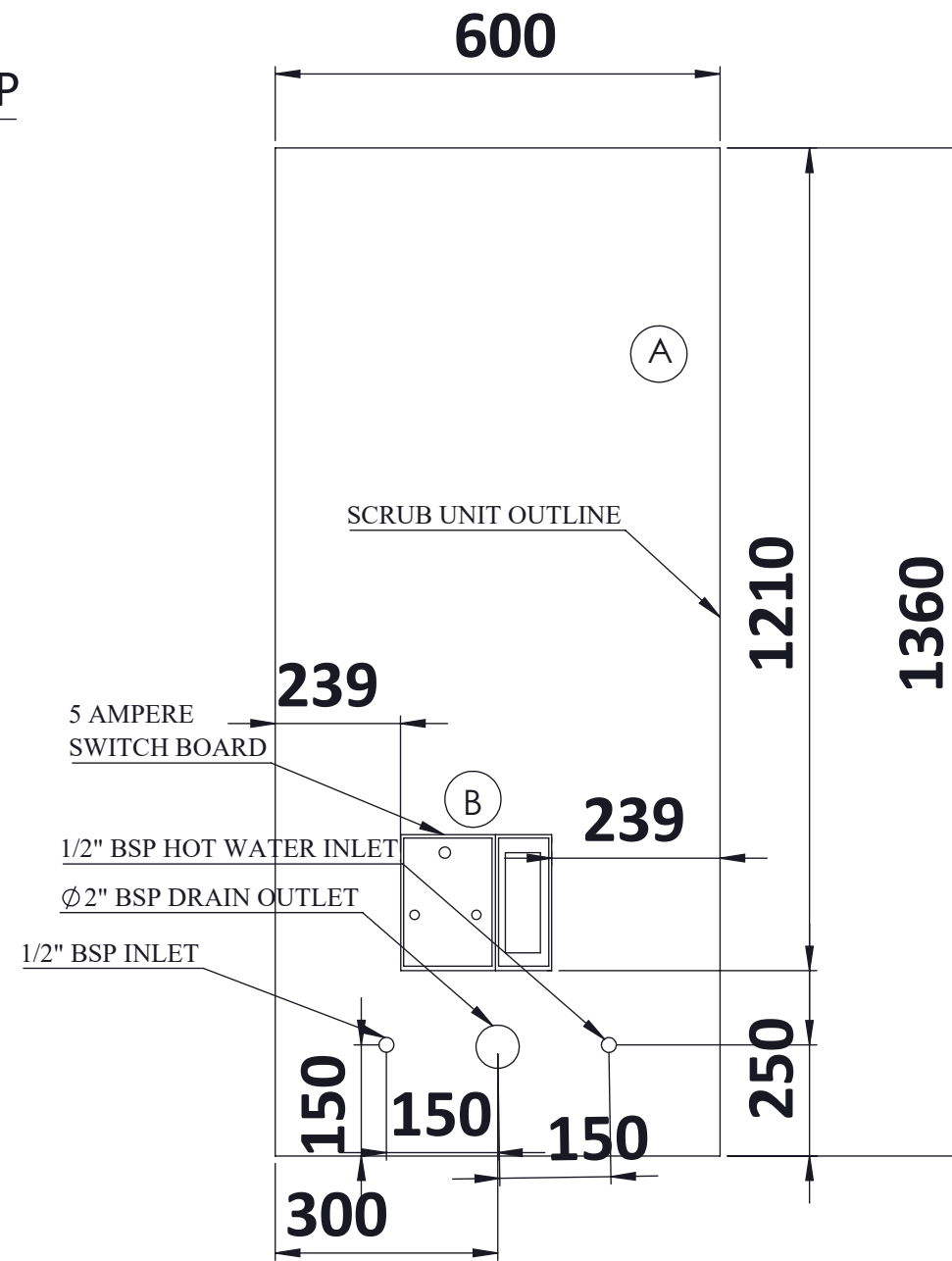
TOP VIEW



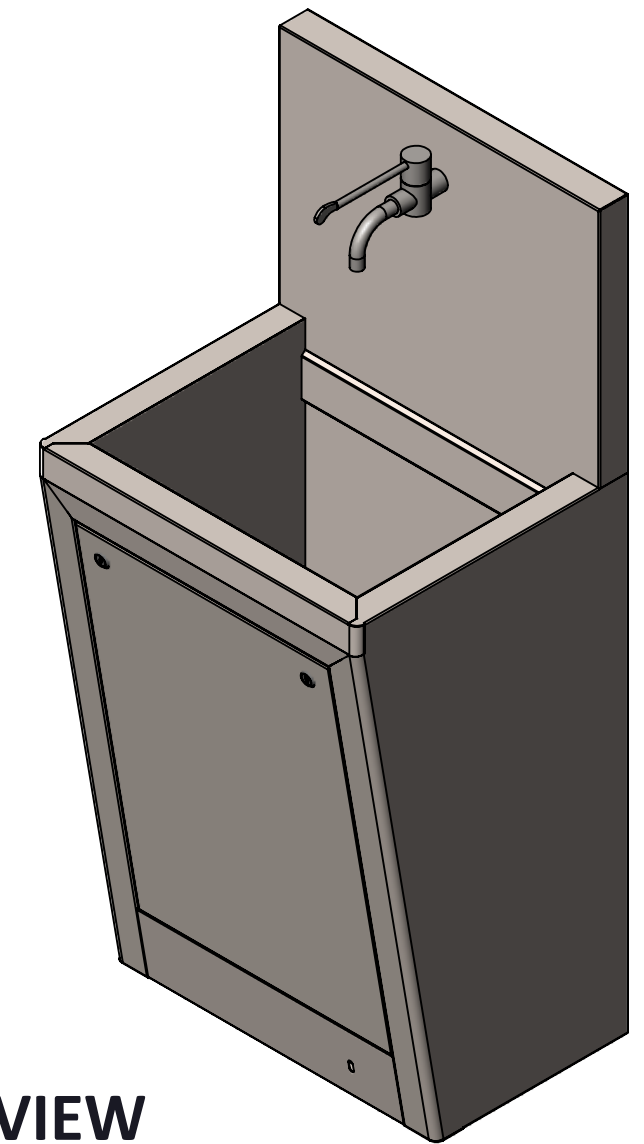
FRONT VIEW



SIDE VIEW



WALL PLUMBING DIAGRAM



ISOMETRIC VIEW


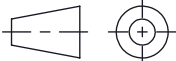
Features:-
Elbow Operate Systems Arrannngement
Material S.S 304-1.2 Thikness
Perfect Matt 4 no finishing
Sink Bib Cock Taps Qty 1 no Brand -Jaguar
Plumbing Material Brand - Astral CPVC
Waste Coupling for Collapsible Pipe
Door Lock Qty 2 & Key Qty 1 nos
Total product 1-year warranty
Easy to clean surface
Rust proof material
Easy to install & Long life

THIS MODEL CAN ALSO BE SUPPLIED WITH ADDITIONAL FEATURES ALONG WITH THIS OPTION:-

SC1) AUTOMATIC SENSOR OPTION (REMOVE ELBOW TAP ADD SPOUT)
SC2) HOT & COOL WATER OPTION
SC3) SOAP DISPENSER ELBOW OPTION
SC4) SOAP DISPENSER FOOT OPTION
SC5) SOAP DISPENSER KNEE OPTION
SC6) SOAP DISPENSER AUTOMATIC SENSOR OPTION

NOTE:- WALL PLUMBING DIAGRAM

1. IN CASE OF HOT & COOL WATER CONNECTION, DIMENSIONS MARKED AS (A) WILL BE APPLICABLE.
2. IN CASE OF SENSOR CONNECTION, DIMENSIONS MARKED AS (B) WILL BE APPLICABLE.

<div><p>CMP METAL "The Name of Quality" 50 - 330° 2015</p></div>		<div><h1>CMP METAL</h1></div>			
	NAME	DATE	MODEL NO.		
DRN	SUNIL		CMP1SSME-3		
CHD	AJAY				
APPD	SUNIL				
SCALE	1 : 1		TITLE:		SIZE
ALL DIMENSIONS IN MM			1BAY SCRUB SINK WITH MANUAL ELBOW OPERATE		A2
			SIZE 600WX508DX1360H		
FIRST ANGLE PROJECTION			DRG.NO:—		SHEET NO
			CMP—503		1 OF 1
					REV.
					0